



6197 Cornerstone Court E, Ste 102
San Diego, CA 92121

Product Specifications

UltraPlex mxIF BC-2A Panel – Human CK5, EGFR, Vimentin, Ki-67

Description: UltraPlex mxIF panel to detect human CK5, EGFR, Vimentin, Ki-67
Cat. No.: BC02A
Application: IHC-P
Product Overview: All components required to multiplex stain a single slide with a simple two step protocol.

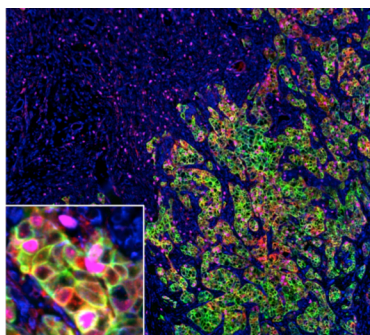
1° Antibody	Clone	1° Hapten	2° Antibody	2° Fluor	Absorbance (nm)	Emission (nm)	Filter Set Examples	ExCoeff (M-1cm-1)
CK5	EP24	CH15	Anti-CH15	CL-490	491	515	FITC/GFP	73,000
Vimentin	EP21	CH14	Anti-CH14	CL-550	550	575	Rhodamine/TRITC/Cy3	150,000
EGFR	EP22	CH16	Anti-CH16	CL-650	655	676	Cy5	250,000
Ki-67	B56	CH19	Anti-CH19	CL-750	759	780		240,000

Suitable for conventional imaging using defined filter sets.
Depending on your imaging scanner or microscope you may want to use Product BC02B with 490, 550, 594 and 650nm fluors instead.

Components: Vial 1: Antibody Diluent Solution
Vial 2: Primary Antibody Cocktail (25X concentrate)
Vial 3: Fluorescent Secondary Antibody Cocktail (25X concentrate)

Storage: 2-8°C
Shelf-Life: Not determined.
Protocols: Download and use the following suggested protocols
Antigen Retrieval – Citrate
Multiplex IF Staining Protocol A

Notes:



Triple Negative Breast Cancer biopsy stained with BC-2A UltraPlex panel: EGFR (red), Vimentin (blue), CK5 (green), Ki-67 (magenta).

Disclaimer: *For In vitro Research Use Only. Not for diagnostic or therapeutic use. Suggested applications of our products are not recommendations to use our products in violation of any patent or as a license under any patent of Cell IDx, Inc. Product may not be resold or modified for resale without prior written approval of Cell IDx, Inc.*

Version 1.0: Revision date 5.24.17